

# Continental

## Refrigerator

### 27" & 32" SANDWICH UNIT REFRIGERATORS

Utilizing Environmentally Safe, CFC-free R-134a Refrigerant

### Standard Features



SW27-8



SW32-8C

- Unique Air Flow Distribution Allows Pan Product to Maintain 33°–41°F Being in Compliance with and Certified Under the '98 NSF Standard For Preparation Units.
- Modern, State-of-the-Art Styling
- Performance Rated Refrigeration System Utilizing Environmentally Safe R-134a Refrigerant
- Easily Serviceable Back Mounted Compressor
- 2" Non-CFC Polyurethane Foam Insulation
- Spring Loaded, Self Closing Door
- Magnetic Snap-In Gasket
- 5" Casters
- Heavy-Duty, Epoxy-Coated Steel Shelves
- Interior Hanging Thermometer
- Full Length Nylon Cutting Board
- Cabinet Construction Consisting of Stainless Steel Front and Top, Aluminum End Panels, Case Back and Interior
- Non-Corrosive, Plasticized Fin Evaporator Coil
- Completely Enclosed, Vented and Removable Case Back
- Automatic, Energy Saving, Non-Electric Condensate Disposal
- 1/6 Size Pans, 4" Deep
- 10 ft Cord and Plug Attached

### Models Available

- SW27-8
- SW27-8C
- SW27-12M
- SW32-8
- SW32-8C
- SW32-12M

### Optional Features & Accessories

- Legs
- Remote Models -R
- Stainless Steel End Panels-SA Models
- Stainless Steel Interior & Exterior-SS Models
- Stainless Steel Finished Back in Lieu of Aluminum
- Stainless Steel Roll Out Drawers in Lieu of Doors-D Models
- Electric Condensate
- Pan Opening Sizes
- Stainless Steel Legs
- Additional Shelves
- Door Locks
- Single Overshelf
- Double Overself



c



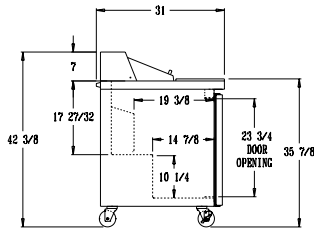
## 27" & 32" Sandwich Unit Refrigerators

### SPECIFICATIONS

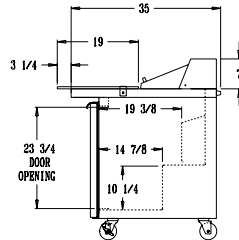
SW27-8    SW27-8C    SW27-12M    SW32-8    SW32-8C    SW32-12M

#### DIMENSIONAL DATA

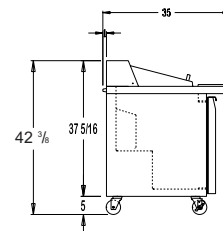
Net Capacity (cu. ft.)	7.4	7.4	7.4	9.0	9.0	9.0
1/6 Size Pans	8	8	12	8	8	12
Width, Overall (in.)	27 <sup>1</sup> / <sub>2</sub>	27 <sup>1</sup> / <sub>2</sub>	27 <sup>1</sup> / <sub>2</sub>	32	32	32
Depth, (incl. Hdls. & Bumpers) (in.)	31	31	31	31	31	31
Depth, Body Only (Less Door(s)) (in.)	27 <sup>1</sup> / <sub>2</sub>	27 <sup>1</sup> / <sub>2</sub>	27 <sup>1</sup> / <sub>2</sub>	27 <sup>1</sup> / <sub>2</sub>	27 <sup>1</sup> / <sub>2</sub>	27 <sup>1</sup> / <sub>2</sub>
Depth, Cutting Board (Std. Top)	12	19	10	12	19	10
Height, Overall (incl. 5" Casters) (in.)	42 <sup>3</sup> / <sub>8</sub>	42 <sup>3</sup> / <sub>8</sub>	42 <sup>3</sup> / <sub>8</sub>	42 <sup>3</sup> / <sub>8</sub>	42 <sup>3</sup> / <sub>8</sub>	42 <sup>3</sup> / <sub>8</sub>
Shelf Area (sq. ft.)	3.5	3.5	3.5	3.9	3.9	3.9
No. of Shelves	1	1	1	1	1	1
No. of Doors	1	1	1	1	1	1
Condensing Unit Size (H.P.)	1/5	1/5	1/5	1/5	1/5	1/5
Refrigerant	R-134a	R-134a	R-134a	R-134a	R-134a	R-134a
Cabinet Electrical	115/60/1	115/60/1	115/60/1	115/60/1	115/60/1	115/60/1
Amps	6.2	6.2	6.2	6.3	6.3	6.3
Fans	2	2	2	2	2	2
Interior Depth (in.)	20	20	20	20	20	20
Interior Height (in.)	26 <sup>1</sup> / <sub>4</sub>	26 <sup>1</sup> / <sub>4</sub>	26 <sup>1</sup> / <sub>4</sub>	26 <sup>1</sup> / <sub>4</sub>	26 <sup>1</sup> / <sub>4</sub>	26 <sup>1</sup> / <sub>4</sub>
Interior Width (in.)	24 <sup>1</sup> / <sub>4</sub>	24 <sup>1</sup> / <sub>4</sub>	24 <sup>1</sup> / <sub>4</sub>	28	28	28
Shipping Weight (lbs.)	180	180	188	195	195	205
Shipping Height (in.)	43 <sup>1</sup> / <sub>4</sub>	43 <sup>1</sup> / <sub>4</sub>	43 <sup>1</sup> / <sub>4</sub>	43 <sup>1</sup> / <sub>4</sub>	43 <sup>1</sup> / <sub>4</sub>	43 <sup>1</sup> / <sub>4</sub>
Shipping Length (in.)	35 <sup>3</sup> / <sub>4</sub>	35 <sup>3</sup> / <sub>4</sub>	35 <sup>3</sup> / <sub>4</sub>	39	39	39
Shipping Depth (in.)	46	46	46	46	46	46



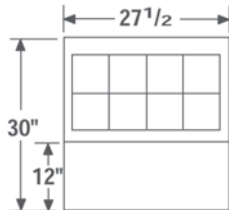
STANDARD TOP SIDE VIEW



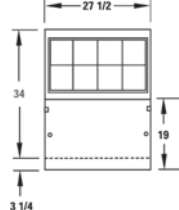
C-TOP SIDE VIEW



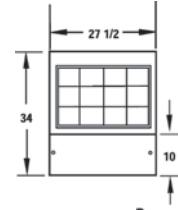
M-TOP SIDE VIEW



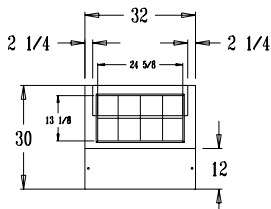
SW27-8 TOP VIEW



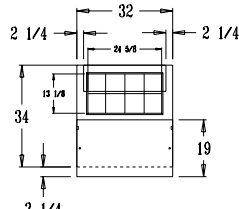
SW27-8C TOP VIEW



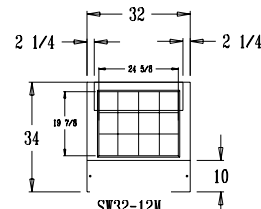
SW27-12M TOP VIEW



SW32-8 TOP VIEW



SW32-8C TOP VIEW



SW32-12M TOP VIEW